




11/2012

# **Mod: DK7/2-NP**

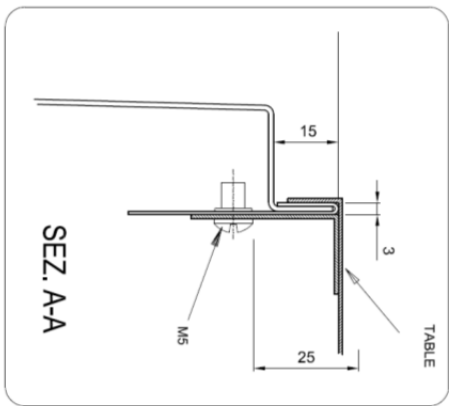
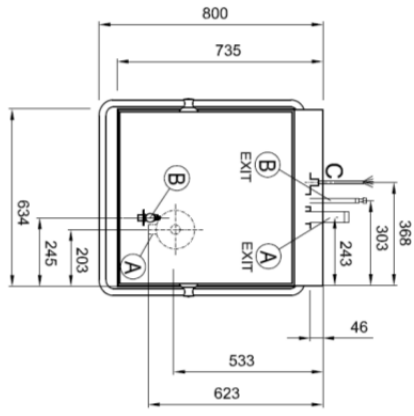
**Production code: ST805BE2**



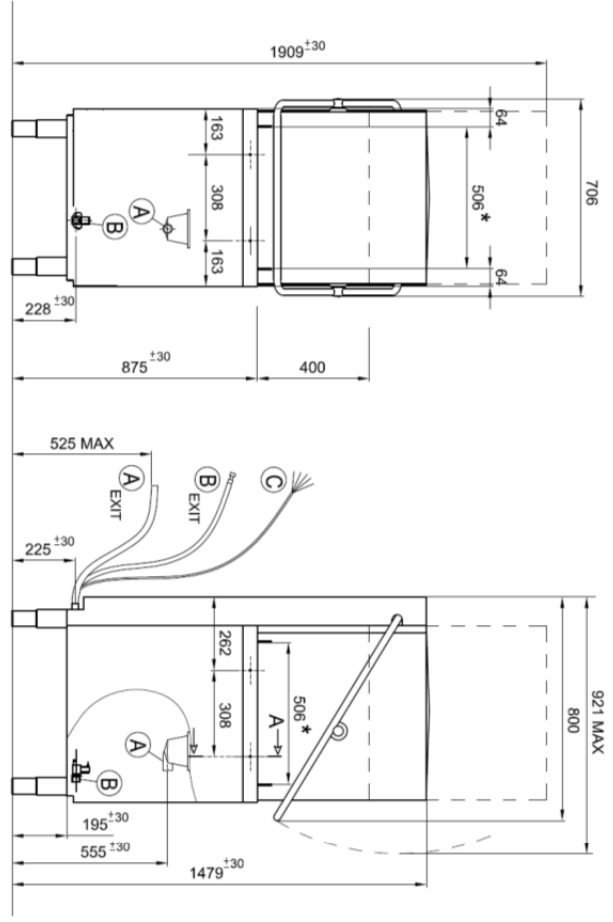
**Diamond**  
catering equipment

|             |  |  |                     |
|-------------|--|--|---------------------|
| ↘           | <b>Model</b>                                 | <b>DK7-2-NP</b>  |                     |
|             | <b>Code Production</b>                       | <b>ST805BE2</b>  |                     |
| Interface : |  |  |                     |
|             |  |   |                     |
|             |  |   |                     |
| ↕           | Overall Dimension (Width-Depth-Height) *open | mm   | 706x800x1479(1909*) |
|             | Packaging Dimension (WxDxH)                  | mm   | 760x840x1520        |
|             | Gross weight                                 | Kg   | 100                 |
|             | Net weight                                   | Kg   | 90                  |
|             | Volume                                       | mc   | 0,97                |
| □           | Rack size                                    | mm   | 500x500             |
|             | Max door /hood opening                       | mm   | 400                 |
|             | Max glasses/plate Height                     | mm   | 380                 |
|             | General construction                         |  | single skin         |
| ↘           | Door/hood Construction                       |  | single skin         |
|             | Tank construction                            |  | deep drawn          |
|             | Tank volume                                  | liter  | 15                  |
|             | Tank heating element                         | W  | 2100                |
| ⚙️          | Tank surface strainers                       |  | optional            |
|             | Wash pump type                               |  | double flow         |
|             | Wash pump power                              | W  | 500                 |
| ↘           | Wash temperature                             | °C   | 55                  |
|             | Boiler type                                  |  | pressurized         |
|             | Boiler volume                                | liter  | 6                   |
|             | Back-flow system                             |  | Valve               |
| ⚙️          | Boiler heating element                       | W  | 6000                |
|             | Rinse booster pump                           | °C   | NO                  |
|             | Rinse booster pump power                     | W  | -                   |
|             | Rinse temperature                            | °C   | 80                  |
|             | Rinse water consumption                      | Liter /rack  | 2,7                 |
| 🚰           | Optimal external water pressure              | bar  | 2                   |
|             | Drain system                                 |  | Overflow            |
| ▶           | Drain pump                                   |  | KIT (DPS-LC/2-NP)   |
|             | Rinse aid dispenser                          |  | YES                 |
| ⚡           | Detergent dispenser                          |  | KIT (DD-LC/1)       |
|             | Wash cycle                                   | sec  | 90 - 150            |
| ⚡           | Electric Power                               | W  | 6500                |
|             | Electric Connection                          | V - ph - Hz  | 400V 3+N 50Hz       |
|             | Fuse   | A  | 16                  |
| ▶           | Plates racks                                 |  | YES                 |
|             | Flat Rack                                    |  | YES                 |
|             | Cutterly Rack                                |  | YES                 |
|             | Electric cable                               |  | YES                 |
|             | Drain hose                                   |  | YES                 |
|             | Fill hose                                    |  | YES                 |

|   |  |              |   |      |           |
|---|--|--------------|---|------|-----------|
| A |  | ∅ 35 mm M    | A | EXIT | ∅ 35 mm M |
| B |  | G 3/4" M     | B | EXIT | G 3/4" F  |
| C |  | Power supply |   |      |           |



\* LUCE UTILE PER GESTELLO  
 USEFUL SPACE FOR BASKET  
 LUMIERE UTILE POUR PANIER  
 NITZARE OFFENING FÜR KORBE  
 ABERTURA UTIL PARA CESTO



|              |                     |                |           |       |        |       |    |
|--------------|---------------------|----------------|-----------|-------|--------|-------|----|
| Designed by: | Installation layout | Determination: | Hood type | Code: | 69496A | Rev.: | 01 |
| N.P./UCCI    |                     | 03.12.2013     |           |       |        |       |    |

